

Foreword

Dear customers, Thank you for choosing Joyoung High Speed Blender.

The instruction book only suit the machine “JYL-Y15U” and all parts of the book only be used for reference or maintain. If you have any problems during operation, please contact the local service center.

Wish Joyoung High Speed Blender brings health, happiness, convenience for your life.

Contents

Safety Instruction	1
Components	4
Operation Instruction	5
Maintenance	8
Safety indexes	9
Failure analysis and troubleshooting	10
Packing detail	11
Measuring cup – reference table for common ingredients	11
List of restricted substances	12

Chapter I

Safety Instruction



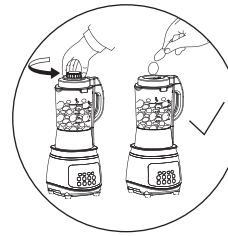
WARNING: Be wary of risks that could result in personal danger, serious injury, or significant property damage.

1. Be sure to put the cup in right place before working.
2. Do not open the lid during work.
3. Please be cautious of steam and high temperature cup.
4. Mixing cup is strictly prohibited from immersing in water.

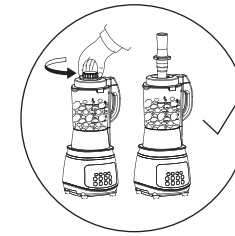


Attention: Pay attention to the risk of injury or damage to the person.

1. It is strictly forbidden to lift the mixing cup during the working process of the product to avoid interruption of normal work.
2. When the product is energized and working, it is strictly forbidden to touch moving parts such as blades and motors to avoid injury or damage to the product.
3. During the working process of the product, it is strictly forbidden to open the lid to add ingredients, otherwise it may cause splashing accidents or property damage. Correct method: Open the feed cap in the middle of the lid and feed the ingredients through the holes in the lid. (Figure 1)
4. It is strictly forbidden to extend the stir bar directly into the mixing cup. Otherwise, the blade and the motor may be damaged, and splashing or short-circuiting may cause injury or property damage. The correct method: Open the feed cap in the middle of the lid and extend the stir bar through the hole in the lid. (Figure 2)
5. Do not use accessories and parts other than this product to avoid fire and personal injury.
6. Do not disassemble or modify this product yourself.
7. It is strictly forbidden to idle the mixing cup (ie no ingredients in the cup) or work overload.
8. After the ingredients are processed, the product will emit 5 “beep” sounds. Please wait for the blade to stop rotating, and make sure that the detachable parts such as the mixing cup and the lid are removed after disconnecting the power supply to avoid danger.
9. Please add ingredients (1400ml hot drink, 1750mL cold drink) according to the instructions or recipes. Adding excessive ingredients may damage the motor and cause spillage or uncooked ingredients.



Picture 1



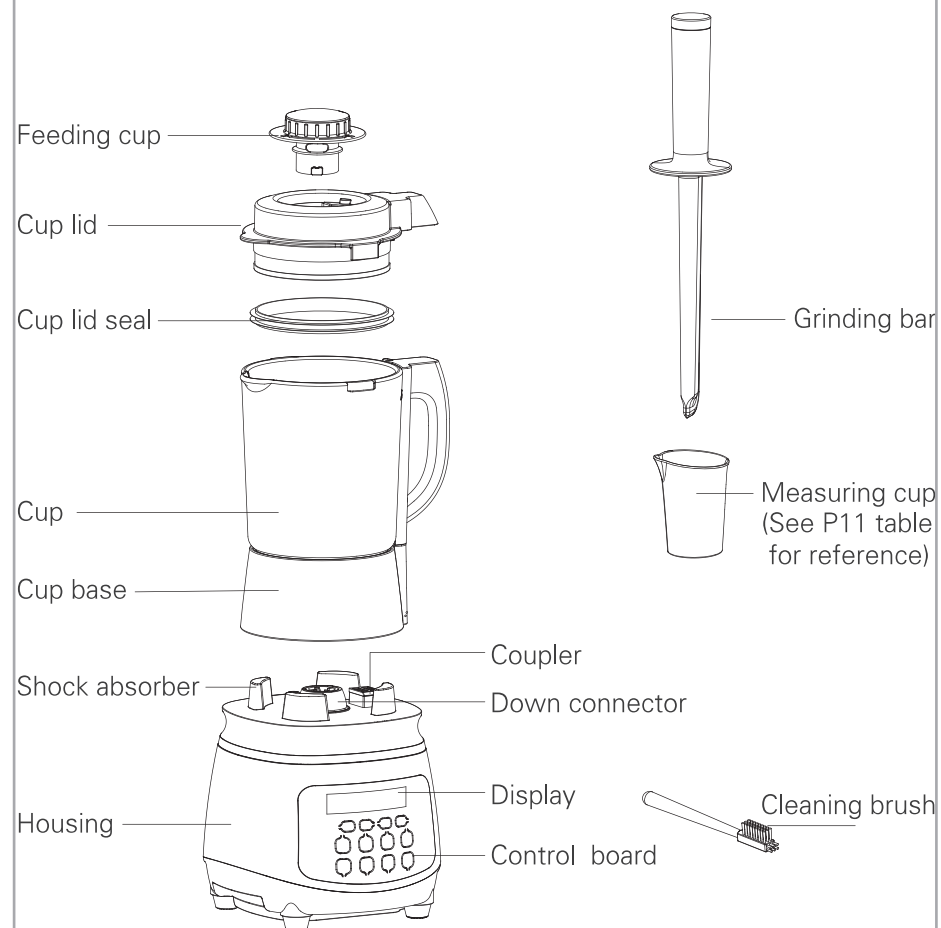
Picture 2

Daily items worthy of attention

1. This product is for home use only and needs to be used in accordance with the guidelines in this manual.
2. This product is only used in areas below 2000 meters.
3. Before turning on the power, make sure that the mixing cup and other components are in place to avoid danger.
4. This product uses a voltage/frequency of 120V~60Hz, please confirm it before use.
5. Do not plug/unplug the power plug with wet hands to avoid electric shock.
6. Do not use other equipment to directly heat the parts of this product.
7. Do not place this product near high temperature, strong magnetic environment, flammable or explosive gases (such as natural gas, biogas, etc.) to prevent damage, malfunction or fire.
8. Operate the product on a level surface. Do not operate the product on a sloping, unstable surface or on fabrics such as carpets, tissues, etc., and away from the edge of the table to prevent injury or damage to the product.
9. If the blade is caught, to prevent scratching or damage to the product, first unplug the power cord and remove the ingredients that block the blade.
10. This product has the ability to adjust the working speed and time. These functions are only suitable for special recipe making.
11. Working Stirring time: Please operate strictly according to the rated working time. The continuous stirring working time should not exceed 6 minutes, after the longest working 6 minutes, stop the machine for 1 minute. For 3 consecutive cycles, it must be stopped for 15 minutes, use the machine after the motor is cooled. Refer to the recipe description and display instructions for specific time of each program.
12. Heating working time: Please operate strictly according to the rated working time, continuous working time should not exceed 40 minutes.

13. Do not move the product during work to avoid spillage of food, resulting in burns and electric shock.
14. If the product stops working during operation, it may be caused by motor temperature control protection. Please disconnect the power supply and cool it for 20–30 minutes before using.
15. If the product is interrupted during the work of making hot drinks, please replace the ingredients before re-energizing. Do not press the button to continue working, otherwise it will cause sticky problem.
16. This product is controlled by smart chips. It is normal if intermittent sounds occur when smashing.
17. Always disconnect the power before removing, installing, adjusting, or cleaning any part of the product.
18. If the power cord is damaged, it must be replaced by a professional from the manufacturer, its service department or similar to avoid hazards.
19. Please check the power cord, plug and other parts for damage before using the product. If the damage is found, please stop using the product. Please contact our customer service department in time. Do not disassemble and repair it yourself to avoid danger.
20. It is strictly forbidden to directly rinse the handle of the mixing cup and the base of the cup to prevent the handle and the heating plate of the cup base from water entering, causing a short circuit or danger.
21. Do not allow water to enter the stirrer handle and the coupler on the housing. If water is in, it must be wiped dry before use.
22. When no one is using this product, please pull out the power plug in time to prevent damage caused by short circuit.
23. Do not dispose of any parts of this product in a dishwasher, microwave or disinfection cabinet to avoid damage.
24. The parts and materials in contact with the foodstuffs are in compliance with food grade certification to ensure clean, hygienic and reliable of the product.
25. This product is not intended to be used by persons (including children) who have physical, sensory or mental impairments or lack of experience and knowledge, unless there are people responsible for their safety to provide supervision or guidance.
26. When discarding this product and product packaging, please return it to the relevant qualification department, and cut off the power cord when discarding the product.

Chapter 2 Components



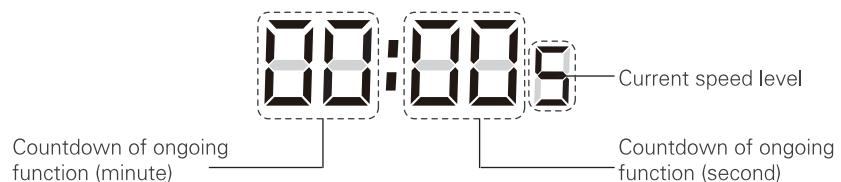
Note: Please refer to the inside product for real product image.

Chapter 3

Operating Instruction

Introduction of all display areas

● Working state display area



● One press control:

Soymilk: making five grains soymilk, such as oatmeal walnut and original flavor soymilk

Soup/Rice paste: making various soup and rice paste, such as sesame paste

Coarser Grains Porridge: making coarser grains porridge, such as buckwheat corn porridge

Juice: making all kinds of vegetable and fruit juice, milkshake, such as orange juice

Sauce: making kinds of fruit sauce, such as sesame and apple sauce

Warm: for warming the food

Note:

- The speed and time defined by the functional program has been set to an ideal state and need not be adjusted.
- Do not exceed the maximum scale of the mixing cup.
- When using this product to make fish soup, there may be a small amount of fish bone remains due to the difference in species and size of fish. Please use a filter net before drinking.

● Control buttons:

start/cancel: for entering into or cancel selected function

start/cancel: for entering into or cancel selected function

● Manual control button (for special recipe)

Press time ‘+’ or ‘-’ to adjust operating time from 5 sec to 6 mins, long press to fast adjust

Press speed ‘+’ or ‘-’ to adjust from level 1~9, H indicate highest speed



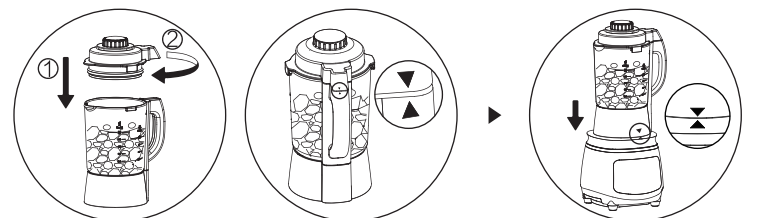
● One press button operating instruction:

1. Put material into blender cup and cover and lid

Remark:

- Don't forget to install cover seal;
- Pls make sure material quantity shouldn't exceed requirement of manual and recipe;
- Total volume should be lower than 1400ml if making hot drink; total volume should be lower than 1750ml if making cold drink;

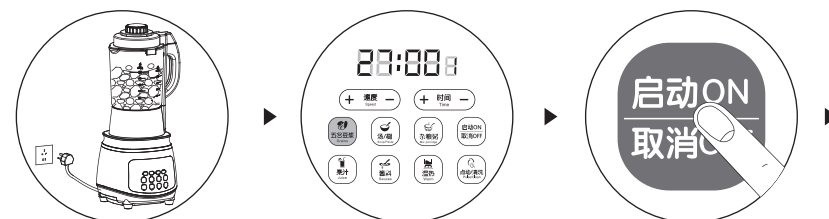
2. Pls install blending cup back to housing properly as instruction picture.



3. Connect power

4. Selected corresponding function as instructed in recipe

5. Press “start/cancel” button



6. After the processing of the ingredients is completed, the product will automatically stop running, after 5-voice “beep” sound the food is ready. After the blade has completely stopped rotating, remove the mixing cup and pour out the food.

Note:

- During the working process of the product, except for the “Start/Cancel” button, it is normal for other buttons to be unresponsive.
- The heating function (grain soy milk, soup/paste, miscellaneous porridge, warm) is processed, and the product shows “b”, indicating that the product has entered the heat preservation state. Maximum keep-warming time 4 hours.



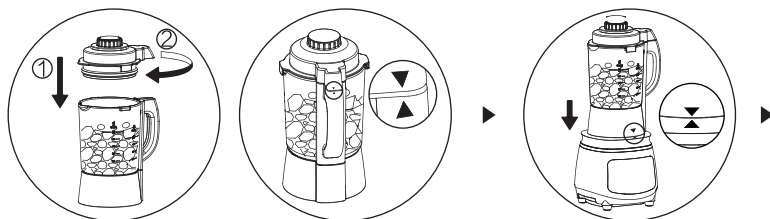
● **Detailed Instructions For Special Recipe Function:**

1. Place the ingredients to be processed into the mixing cup, cover the lid and the feeding cap, and ensure the cup is in place.

Note:

- Do not forget the lid seal;
- Special recipe programs do not have heating process;
- When adding warm water, the total amount of ingredients and liquids should not exceed 1400mL; As for cold drinks, the total amount of ingredients and liquids should not exceed 1750mL.

2. Attach the mixing cup filled in foodstuff with lid closed to the main body according to the place mark.



3. Turn on the power.

4. Set the working time and speed according to the instructions on the special recipe.

Note: When the working time is set to 00:00, the machine cannot be started.

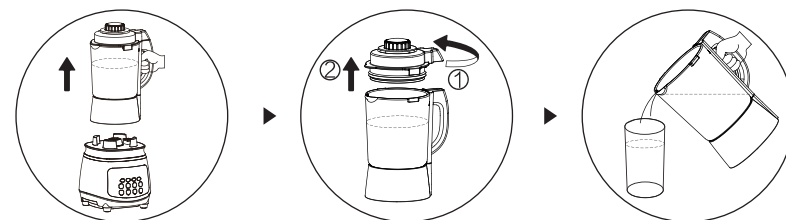
5. Select the "Start / Cancel" button and the product will start running.

Note: If the blade jams when the product starts running, please adjust the “speed gear position” to increase the running speed or cut the food into small pieces.



6. After the processing of the ingredients is completed, the product will automatically stop running, after 5-voice “beep” sound the food is ready. After the blade has completely stopped rotating, remove the mixing cup and pour out the food.

Note: In the working process of the product, except for the “Speed+,-” and “Start/Cancel” keys, it is normal for other buttons to not respond.



Chapter 4 Maintenance and maintenance

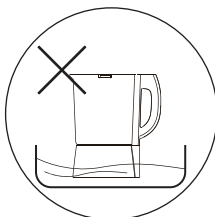
1. Unplug the power plug before cleaning the product.
 2. Please clean the product in time after use.
 3. Wipe the body and the outside of the mixing cup with a damp cloth. Do not put the main body in water or other liquids. Or be rinsed under water or other liquids to prevent leakage or damage to the device. (Figure 3, Figure 4, Figure 5)
 4. When cleaning, rinse the inside of the mixing cup and accessories with water, and wipe it dry (Figure 6); When washing the inside of the mixing cup, be careful that the blade is sharp to avoid cuts and wear protective gloves.
- Note: The paste can be cleaned it won't affect normal use.
5. Do not use steel balls, abrasive cleaners or corrosive liquids such as benzene or acetone to clean the product
 6. Make sure the product is clean and dry before storing the product
 7. This product should be stored in a dry place and protected from direct sunlight.
 8. Quick cleaning: add right amount of water to the mixing cup, install the lid and feeding cover, and install the mixing cup on the main body, turn on the power and press the “Jog/Cleaning” button to run for 5 to 10 seconds. Disconnect the power, remove the mixing cup, open the lid and pour out the water and wipe it dry.

Note:

If you are exposed to greasy ingredients such as meat, it is recommended to wash them manually with dishwashing detergent.



Picture 3



No immersing
Picture 4



No washing
Picture 5



Picture 6

Chapter 5 Safety indexes

Rated Voltage: 120V~

Rated Frequency: 60HZ

Heating Power: 900W

Motor Power: 1000W

Rated Capacity: Hot drink 1400ML

Cool drink 1750ML

Chapter 6 Judgment of abnormal phenomena

Phenomenon	Reasons	Solution
Solution	<ol style="list-style-type: none"> 1. The power cord is not plugged in properly 2. Blender cup and body are not well assembled 	<ol style="list-style-type: none"> 1. Check the power cord and make sure to plug in the socket. 2. Make sure the stirring cup is properly installed with the body.
Indicator light is on but machine does not work	Product failure	Send to Joyoung service center to repair
Heating does not stop	Product failure	Send to Joyoung service center to repair
Overflowing pot	<ol style="list-style-type: none"> 1. Select not appropriate function keys 2. The surface of the anti-overflow electrode has residue 3. Add too much or too little material and water 4. Product failure 	<ol style="list-style-type: none"> 1. Press the recipe or instructions to select the corresponding function keys 2. Wash the cup lid 3. Add material as the recipe or the instruction 4. Send to Joyoung service center to repair
Creamy	<ol style="list-style-type: none"> 1. The blending cup is not cleaned 2. Add too much material 3. Choose the wrong function 	<ol style="list-style-type: none"> 1. Wash the blending cup 2. Add material as the recipe. 3. Choose the right function as recipe or instruction book.
Processing time is too long	The voltage is too low	Use the voltage stabilizer
"E00" alarm	The lid has debris on the anti-overflow electrode	Wash the cup lid
"E02" alarm	The lid was not properly installed	Rescrew the lid
"E03" "E04" alarm	Abnormal voltage	Use the voltage stabilizer
"E10" alarm	<ol style="list-style-type: none"> 1. Add too much material 2. No water in blending cup 3. Choose the wrong function keys 4. Product failure 	<ol style="list-style-type: none"> 1. Add material as recipe or the instruction book. 2. Add water then start to work 3. Choose the right function as recipe or the instruction book. 4. Send to Joyoung service center to repair

Phenomenon	Reasons	Solution
“E01” “E05” “E06” “E07” “E08” “E09” “E11” “E12” “E13” alarm	Product failure	Unplug the plug and wait for 1 minute, switch on the power and start again. If the fault is still unsolved, please send it to the after-sales service center of Joyoung for maintenance

- If there is any hard problem, please do not disassemble the machine by yourself, Please contact the Joyoung service center for help.
- If there any change of model or accessory, please forgive us that we will not notify specially.

Packing detail

Name	Super blender	Instruction book	Mesuring cup	Recipe	Blending bar	Cleaning brush
Amount	1set	1pcs	1pcs	1pcs	1pcs	1pcs

Measuring cup- Reference table

Ingredients	One cup	Weight/g
Soy beans	One cup	90
Rice	One cup	110
Millet	One cup	120
Red beans	One cup	100
Green beans	One cup	100
Black sesame	One cup	80
White sesame	One cup	80
Oats	One cup	100
Peanut	One cup	80
Cashew nuts	One cup	70

All the information are provided by Joyoung Reseaching department, If there any change of model or accessory, please forgive us that we will not notify specially.

Product Name: High Speed Blender		Model : JYL-Y15U				
Unit	Restricted substances and chemical symbols					
	(Pb)	(Hg)	(Cd)	(Cr ⁺⁶)	(PBB)	(PBDE)
Material contacted with food (cup body,cup lid,etc)	○	○	○	○	○	○
Rubber parts	○	○	○	○	○	○
Non-flame retardant plastic structural parts (stirrer, key, etc.)	○	○	○	○	○	○
Stainless steel structural parts (mixing knife, gasket, etc.)	○	○	○	○	○	○
Other metal structural parts (shaft sleeve, decorative parts, etc.)	○	○	○	○	○	○
Standard parts (screw, washer, etc.)	○	○	○	○	○	○
Glass cup*	○	○	○	○	○	○
Flame retardant plastic structural parts (base, motor support, etc.)	○	○	○	○	○	超出 0.1 wt %
Electrical components, printed circuit board components (PCB boards, capacitors, transformers, etc.), electrical heaters, motors, power cords, wiring harness,	超出 0.1 wt %	○	超出 0.01 wt %	○	○	超出 0.1 wt %

备考1. “超出0.1 wt %”及“超出0.01 wt %”系指限用物质之百分比含量超出百分比含量基准值。
Note 1: “Exceeding 0.1 wt %” and “exceeding 0.01 wt %” indicate that the percentage content of the restricted substance exceeds the reference percentage value of presence condition.
备考2. “○”系指该项限用物质之百分比含量未超出百分比含量基准值。
Note 2: “○” indicates that the percentage content of the restricted substance does not exceed the percentage of reference value of presence.
备考3. “—”系指该项限用物质为排除项目。
Note 3: The “—” indicates that the restricted substance corresponds to the exemption.