



# 前言

尊敬的用户，感谢您选择九阳高速破壁调理机。

本说明书仅适用于九阳股份有限公司“JYL-Y15U”高速破壁调理机产品。书中的所有内容仅供使用者使用和维护时参考，未尽事宜，欢迎用户向本公司的客户服务部门咨询。

愿九阳高速破壁调理机给您的生活带来温馨、便捷与健康。

# 目录

第一章 安全使用注意事项	1
第二章 部件	4
第三章 产品使用方法	5
第四章 保养和维护	8
第五章 产品安全指针	9
第六章 故障分析及排除	10
装箱明细	11
量杯——常见食材参照表	11
限用物质标示表	12

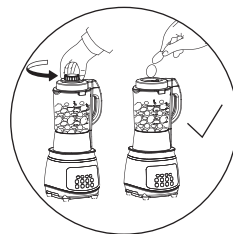
# 第一章 安全使用注意事项

**警告** 对可能导致人员危险、重伤、重大财产损失的风险要警惕。

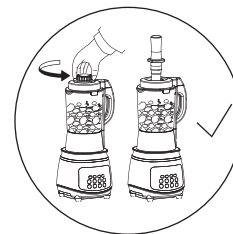
1. 工作前请务必将杯盖旋转到位。
2. 工作中严禁打开杯盖。
3. 请小心蒸汽、杯体烫手。
4. 搅拌杯严禁浸入水中。

**注意** 对可能导致人员受伤或物品损害的风险要关注。

1. 产品工作过程中，严禁提起搅拌杯，以免中断正常工作。
2. 产品通电和工作时，严禁接触到刀片、电机等可动部件，以免受伤或使产品受损。
3. 产品工作过程中，严禁打开杯盖添加食材，否则易发生喷溅造成伤害事故或财产损失。正确方法：打开杯盖中间的投料盖，食材通过杯盖中的孔投入。(如图一)
4. 严禁将搅拌棒直接伸入搅拌杯中使用，否则易损坏刀片、电机，发生喷溅或短路造成伤害事故或财产损失。正确方法：打开杯盖中间的投料盖，将搅拌棒穿过杯盖中的孔伸入使用。(如图二)
5. 切勿使用本产品以外的附件和部件，以免引起火灾和人身伤害。
6. 严禁自行拆卸或改造本产品。
7. 严禁搅拌杯空转（即杯中无食材）或超负荷使用。
8. 食材加工完毕，产品发出5声“嘀”提示音，请待刀片停止转动，并确保断开电源后，再取下搅拌杯、杯盖等可拆卸部件，以免发生危险。
9. 请按照说明书或食谱规定量加入食材（热饮1400mL、冷饮1750mL），加入过量食材可能会损坏电机，造成喷溅溢出或煮不熟。



图一



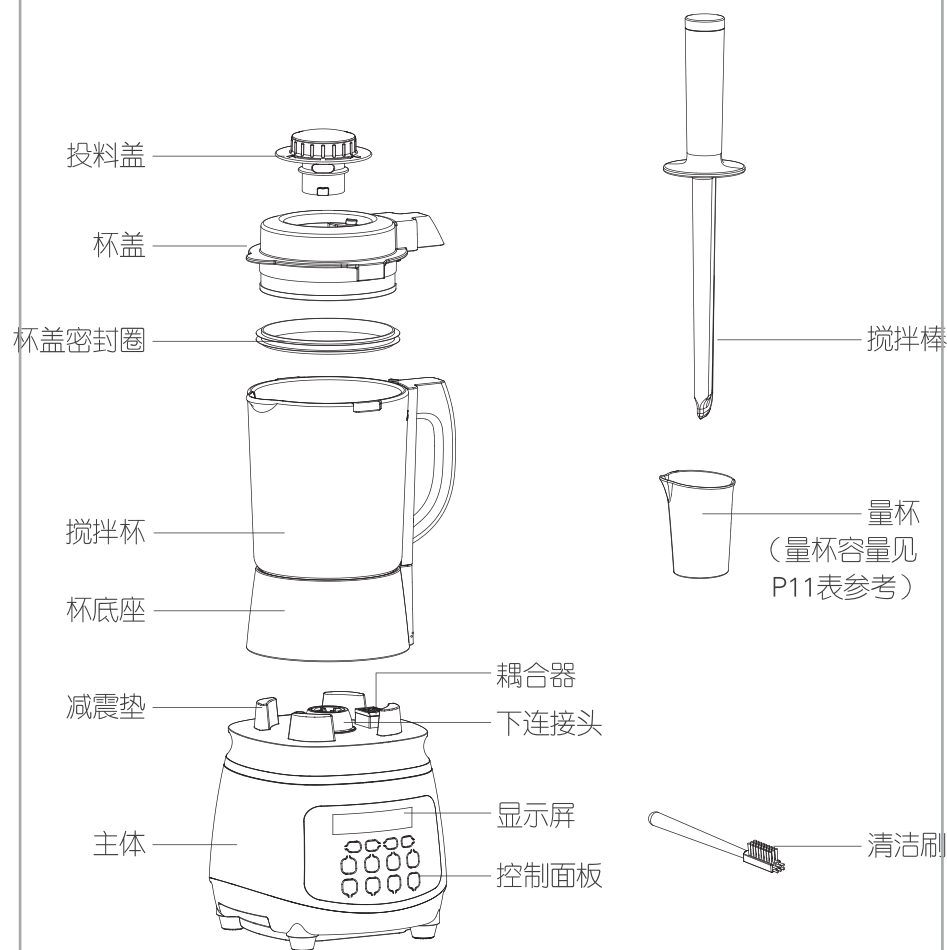
图二

## 日常注意操作项

1. 本产品仅适用于家庭使用，且需要按照本说明书的指引使用，不得私自用作它途。
2. 本产品仅限在海拔2000米以下地区使用。
3. 本产品接通电源前，请务必确认搅拌杯及其他部件已安装到位，以避免发生危险。
4. 本产品采用电压频率为120V~60Hz，请确认电压无误后再使用。
5. 请勿用湿手插/拔电源插头，避免引起触电。拔下插头时，须握住插头拔出，切勿用力猛拉或扭曲电源线，以防电源线损坏，产生漏电危险。
6. 本产品各部件请勿使用其它设备直接加热。
7. 请勿将本产品靠近高温、强磁、易燃易爆气体（如天然气、沼气等）以防引起器件损坏、故障或火灾。
8. 请在水平棒面上操作本产品，勿在倾斜、不稳定的棒面上或在地毯、毛巾等织物上操作本产品，并远离樟面边缘，防止产生伤害事故或损坏本产品。
9. 如果刀片被卡住，为防止划伤或损坏产品，请先拔下电源插头，然后清除堵塞刀片的食材。
10. 本产品设有可调节工作速度与时间的功能，这些功能只适用于特殊食谱製作。
11. 搅拌工作时间：请严格按照额定工作时间操作，连续搅拌工作时间不超过6分钟，以最长工作6分钟停机1分钟为一个周期；连续工作3个周期后，必须停机15分钟，待电机冷却后再工作。每个程序具体时间参考食谱说明及显示屏指示。
12. 加热工作时间：请严格按照额定工作时间操作，连续工作时间不得超过40分钟。

13. 工作过程中请勿移动本产品，避免食材溢出，造成烫伤、触电。
14. 如在操作过程中产品停止工作，可能是电机温控保护造成，请断开电源，冷却20-30分钟后再使用。
15. 如果产品在制作热饮的工作过程中断电，重新通电前，请更换食材重新制作，切勿按下按钮继续工作，否则会造成粘糊。
16. 本产品采用智能芯片控制，粉碎时出现间歇性忽快忽慢的声音属正常现象。
17. 在拆、装、调校或清洗本产品的任何部件之前，请务必断开电源。
18. 如果电源线损坏，为了避免危险，必须由制造商、其维修部或类似部门的专业人员更换。
19. 产品使用前请检查电源线、插头等其它零部件是否损坏，如发现损坏请停止使用产品，请及时与本公司客户服务部门联系，切勿自行拆卸修理，以免发生危险。
20. 严禁直接冲洗搅拌杯手柄及杯底座，以免手柄及杯底座发热盘进水，发生短路现象，造成危险。
21. 搅拌杯手柄及主体上的耦合器切勿进水，如果进水，必须擦干后才能使用。
22. 无人使用本产品时，为防止出现短路等造成损害，请及时拔掉电源插头。
23. 请勿将本产品任何部件放入洗碗机、微波炉和消毒柜内清洗及消毒，以免损坏。
24. 本产品与食材相接触的部件材料均符合食品级认证，干净、卫生、可靠。
25. 产品应储存到儿童不易触及的地方，切勿让肢体不健全、感官或精神上有所障碍或缺乏相关经验和知识的人（包括儿童）使用或玩耍本产品。
26. 丢弃本产品和产品包装时，请交由相关部门回收。
27. 本产品在高温搅拌时产生一定程度的机器噪声，打扰之处，敬请谅解。
28. 本产品仅限于与配套的连接头、底座等部件一起使用，请勿使用本产品以外的部件，以免影响产品性能或发生事故。
29. 热的液体倒入杯体时，由于快速蒸发，应小心热蒸汽从杯盖中喷出。
30. 本产品使用前请确保接地线接地良好，以免发生漏电事故。
31. 在产品工作过程中若有液体溢出，请及时清理，避免液体溢出至连接器处。
32. 使用后请及时清洗，与食物接触部分请用清水进行清洗，取出切割刀片、排空搅拌杯和清洗各配件时，小心刀片锋利以免割伤，可佩戴保护手套。
33. 本产品使用完毕后加热组件表面仍有余热，请冷却后再进行清洗。
34. 更换配件或接触配件前，请先切断电源并取下插头以避免误启动机器造成伤害。

## 第二章 部件

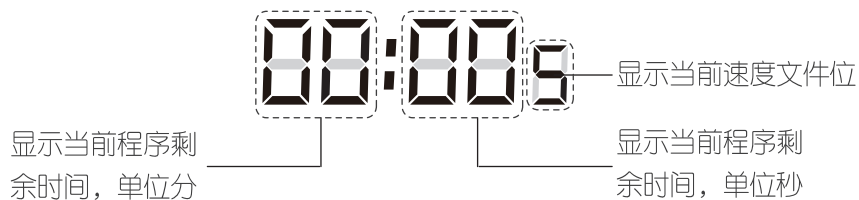


注：产品图片请以包装内实物为准！

# 第三章 产品使用方法

## 各区域显示功能介绍

### ● 工作状态显示区介绍:





### ● 功能介绍:

- |  |  |
|--|--|
|  五谷豆浆：用于制作五谷类豆浆，如燕麦核桃豆浆、原味豆浆等。 |  汤/糊：用于製作各種濃湯/米糊，如黑芝麻糊、十谷米糊等。 |
|  杂粮粥：用于制作杂粮类粥，如八宝粥、大米粥等。       |  果汁：用于制作各种果蔬汁、奶昔，如精力蔬果汁、橙汁等。  |
|  酱料：用于制作各种酱料，如芝麻酱、花生酱等。        |  温热：用于将常温食物温热。                |

### 注:

- 功能程序定义的运行速度和时间已设置成理想状态，不需要再进行调节；
- 各功能食材总量请勿超过搅拌杯最大刻度线；
- 使用本产品制作鱼汤时，因鱼品种和大小有差异，可能存在少量鱼刺鱼骨残留，饮用前请用滤网过滤。

### ● 控制按键功能介绍:

- |  |   |
|--|---|
|  启动/取消 OFF         | 启动/取消：用于进入选择的功能或取消正在运行的功能。                  |
|  点动/清洗 Pulse/Clean | 点动/清洗：瞬间搅拌力道强，适合处理较硬的食材，如：冰块，可制作冰沙，也适用于快速清洗 |

### ● 特殊食谱按键功能介绍:

选择时间“+”或“-”调整，工作时间5秒~6分钟，长按可实现快速调整。  
选择速度“+”或“-”调整，档位从1~9、H，共10档，H为最高档位，数值越小对应的转速越低。



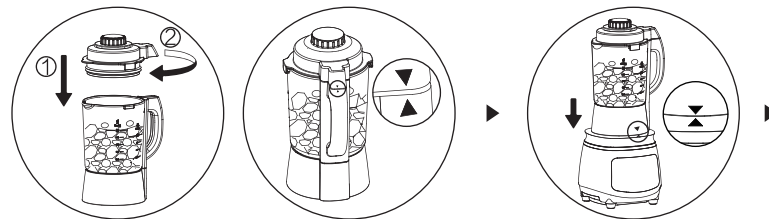
### ● 功能详细使用说明:

1. 将食材放进搅拌杯内，盖上杯盖与投料盖，并确保旋转到位。

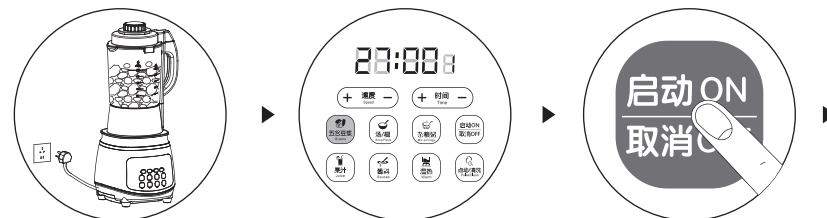
#### 注意:

- 请勿漏装杯盖密封圈；
- 加入食材量不能超过说明书及食谱要求；
- 制作热饮时，食材及液体总量不得超过1400mL；冷饮时，食材及液体总量不得超过1750mL。

2. 将装好食材与杯盖的搅拌杯按照箭头标志装在主体上。



3. 接通电源。
4. 选择食谱对应的功能按键，如“五谷豆浆”键。
5. 按下“启动/取消”键，产品开始运行。



6. 食材加工完毕，产品自动停止运行，并发出5声“嘀”声提示食材制作完成，待刀片完全停止转动后取下搅拌杯，倒出食物。

注意：

- 产品工作过程中，除“启动/取消”键，其它按键无反应属正常现象。
- 加热功能（五谷豆浆、汤/糊、杂粮粥、温热）加工完毕，产品显示“b”，表示产品进入保温状态。保温最长时间4小时。



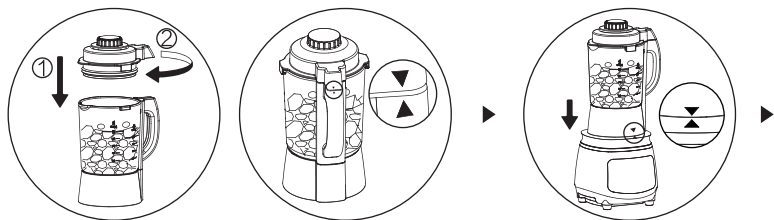
### ● 特殊食谱功能详细使用说明：

1. 将食材放进搅拌杯内，盖上杯盖与投料盖，并确保旋转到位。

注意：

- 请勿漏装杯盖密封圈；
- 特殊食谱程序不可加热；
- 加入温水时，食材及液体总量不得超过1400mL；冷饮时，食材及液体总量不得超过1750mL。

2. 将装好食材与杯盖的搅拌杯按照箭头标志装在主体上。



3. 接通电源。

4. 根据特殊食谱上的说明设置工作时间和速度。

注意：工作时间设置为00:00时，无法启动工作。

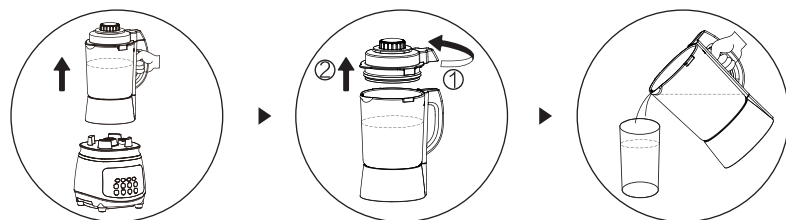
5. 选择“启动/取消”键，产品开始运行。

注意：产品开始运行时如发生刀片卡死现象，请调节“速度档位”，增加运行速度或将食材切成小块。



6. 料理完毕后产品会自动停止运行，并发出5声“嘀”提示食材制作完成，待刀片完全停止转动后取下搅拌杯，倒出食物。

注：产品工作过程中，除“速度+、-”，“启动/取消”键外，其它按键无反应属正常现象。



## 第四章 保养和维护

1. 清洗产品前，拔掉电源插头。
2. 使用后请及时清洗本产品。
3. 主体和搅拌杯外部可用湿布擦拭，切勿将主体放入水或其它液体中，也不能在水或其它液体下冲洗，以防漏电或器件损坏。（如图三、图四、图五）
4. 清洗时，用清水冲洗搅拌杯内部及配件，并抹干（如图六）；排空或清洗搅拌杯内部时，小心刀片锋利以免割伤，可佩戴保护手套。

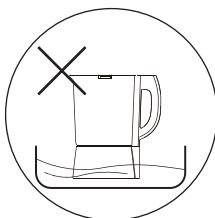
注：发生粘稠可自行清洗，不影响正常使用。

5. 请勿使用钢丝球、研磨性清洁剂或腐蚀性液体（比如汽油或丙酮）来清洁产品。
6. 如要将产品收起，请确保产品已清洁干净且保持干燥，避免受潮造成故障。
7. 本产品应储存于干燥处并避免阳光直接照射。
8. 快速清洗：在搅拌杯中加入适量水，安装好杯盖及投料盖，将搅拌杯安装到主体上，接通电源，按下“点动/清洗”键，工作5至10秒。断开电源，取下搅拌杯，打开杯盖将水倒出并抹干即可。

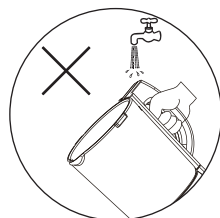
注意：产品如接触具油脂的食材，建议可用海绵搭配中性清洁剂清洗。



图三



严禁浸水  
图四



严禁冲洗  
图五



图六

## 第五章 产品安全指针

额定电压：120V ~

额定频率：60Hz

加热功率：900W

马达功率：1000W

额定容量：热饮 1400mL

冷饮 1750mL

## 第六章 故障分析及排除

故障现象	原因分析	故障排除
指示灯不亮	1. 电源线未插好 2. 搅拌杯与主体未装配好	1. 检查电源线并确实插入插座 2. 确定搅拌杯与主体安装好
指示灯亮产品不工作	产品本身故障	送九阳售后服务中心维修
加热不停止	产品本身故障	送九阳售后服务中心维修
溢锅	1. 选择功能键不合适 2. 防溢电极表面有残渣 3. 加入物料量和水量过多或过少 4. 产品本身故障	1. 按食谱或说明书选择对应的功能 2. 清洗杯盖 3. 按食谱配方或说明书要求操作 4. 送九阳售后服务中心维修
粘稠	1. 搅拌杯内未清洗干净 2. 加料太多 3. 选择功能键不合适	1. 将搅拌杯清洗干净 2. 按食谱配方操作 3. 按食谱或说明书选择对应的功能
加工时间过长	电压过低	使用稳压器
“E00”报警	杯盖防溢电极有杂物	清洗杯盖
“E02”报警	杯盖没有安装到位	重新旋紧杯盖
“E03”“E04”报警	电压异常	使用稳压器
“E10”报警	1. 物料过多 2. 搅拌杯内未加水 3. 选择功能键不合适 4. 产品本身故障	1. 清理后按食谱或说明书加入食材 2. 请加水后再启动 3. 按食谱或说明书选择对应的功能 4. 送九阳售后服务中心维修

故障现象	原因分析	故障排除
“E01” “E05” “E06” “E07” “E08” “E09” “E11” “E12” “E13” 报警	产品本身故障	拔下插头等待1分钟后，重新通电再启动一次，如故障仍未解除，请送九阳售后服务中心维修

· 如问题不能解决，切勿私自拆卸机器，请联系当地经销商进行咨询。

· 以上内容如因型号或零部件变更与实物不符，请以实物为准，恕不另行通知敬请谅解！

### 装箱明细

名称	高速破壁调理机	说明书	量杯	食谱	搅拌棒	清洁刷
数量	1台	1个	1个	1本	1个	1把

### 量杯——常见食材参照表

食材	1杯量	重量/克
黄豆	1杯	90
大米	1杯	110
小米	1杯	120
红豆	1杯	100
绿豆	1杯	100
黑芝麻	1杯	80
白芝麻	1杯	80
燕麦	1杯	100
花生	1杯	80
腰果	1杯	70

(所有数据由九阳研发中心提供，若有变更恕不另行通知)

设备名称：高速破壁调理机		型号（型式）：JYL-Y15U				
单元	限用物质及其化学符号					
	铅 (Pb)	汞 (Hg)	镉 (Cd)	六价铬 (Cr <sup>+6</sup> )	多溴联苯 (PBB)	多溴二苯醚 (PBDE)
与食品接触的配件（杯体、杯盖等）	○	○	○	○	○	○
橡胶件（密封圈、脚垫）	○	○	○	○	○	○
非阻燃塑料结构件 (搅拌棒、按键*等)	○	○	○	○	○	○
不锈钢结构件（搅拌刀、垫片等）	○	○	○	○	○	○
其它金属结构件（轴套、装饰件*等）	○	○	○	○	○	○
标准件（螺钉、垫圈等）	○	○	○	○	○	○
玻璃杯*	○	○	○	○	○	○
阻燃塑料结构件 (底座、电机支架*等)	○	○	○	○	○	超出 0.1 wt %
电器件、印刷电路板组件（PCB板、电容、变压器等）、电热器、电机、电源线、线束	超出 0.1 wt %	○	超出 0.01 wt %	○	○	超出 0.1 wt %

备考1. “超出0.1 wt %”及“超出0.01 wt %”系指限用物质之百分比含量超出百分比含量基准值。  
 Note 1: “Exceeding 0.1 wt %” and “exceeding 0.01 wt %” indicate that the percentage content of the restricted substance exceeds the reference percentage value of presence condition.  
 备考2. “○”系指该项限用物质之百分比含量未超出百分比含量基准值。  
 Note 2: “○” indicates that the percentage content of the restricted substance does not exceed the percentage of reference value of presence.  
 备考3. “—”系指该项限用物质为排除项目。  
 Note 3: The “—” indicates that the restricted substance corresponds to the exemption.



## Foreword

Dear customers, Thank you for choosing Joyoung High Speed Blender.

The instruction book only suit the machine “JYL-Y15U” and all parts of the book only be used for reference or maintain. If you have any problems during operation, please contact the local service center.

Wish Joyoung High Speed Blender brings health, happiness, convenience for your life.

## Contents

Safety Instruction	1
Components	4
Operation Instruction	5
Maintenance	8
Safety indexes	9
Failure analysis and troubleshooting	10
Packing detail	11
Measuring cup – reference table for common ingredients	11
List of restricted substances	12

# Chapter I

## Safety Instruction



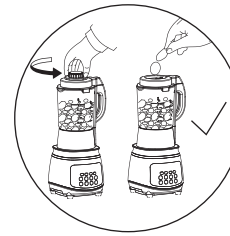
**WARNING:** Be wary of risks that could result in personal danger, serious injury, or significant property damage.

1. Be sure to put the cup in right place before working.
2. Do not open the lid during work.
3. Please be cautious of steam and high temperature cup.
4. Mixing cup is strictly prohibited from immersing in water.

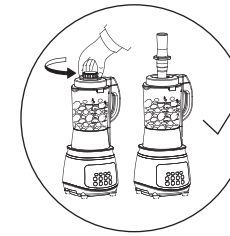


**Attention:** Pay attention to the risk of injury or damage to the person.

1. It is strictly forbidden to lift the mixing cup during the working process of the product to avoid interruption of normal work.
2. When the product is energized and working, it is strictly forbidden to touch moving parts such as blades and motors to avoid injury or damage to the product.
3. During the working process of the product, it is strictly forbidden to open the lid to add ingredients, otherwise it may cause splashing accidents or property damage. Correct method: Open the feed cap in the middle of the lid and feed the ingredients through the holes in the lid. (Figure 1)
4. It is strictly forbidden to extend the stir bar directly into the mixing cup. Otherwise, the blade and the motor may be damaged, and splashing or short-circuiting may cause injury or property damage. The correct method: Open the feed cap in the middle of the lid and extend the stir bar through the hole in the lid. (Figure 2)
5. Do not use accessories and parts other than this product to avoid fire and personal injury.
6. Do not disassemble or modify this product yourself.
7. It is strictly forbidden to idle the mixing cup (ie no ingredients in the cup) or work overload.
8. After the ingredients are processed, the product will emit 5 “beep” sounds. Please wait for the blade to stop rotating, and make sure that the detachable parts such as the mixing cup and the lid are removed after disconnecting the power supply to avoid danger.
9. Please add ingredients (1400ml hot drink, 1750mL cold drink) according to the instructions or recipes. Adding excessive ingredients may damage the motor and cause spillage or uncooked ingredients.



Picture 1



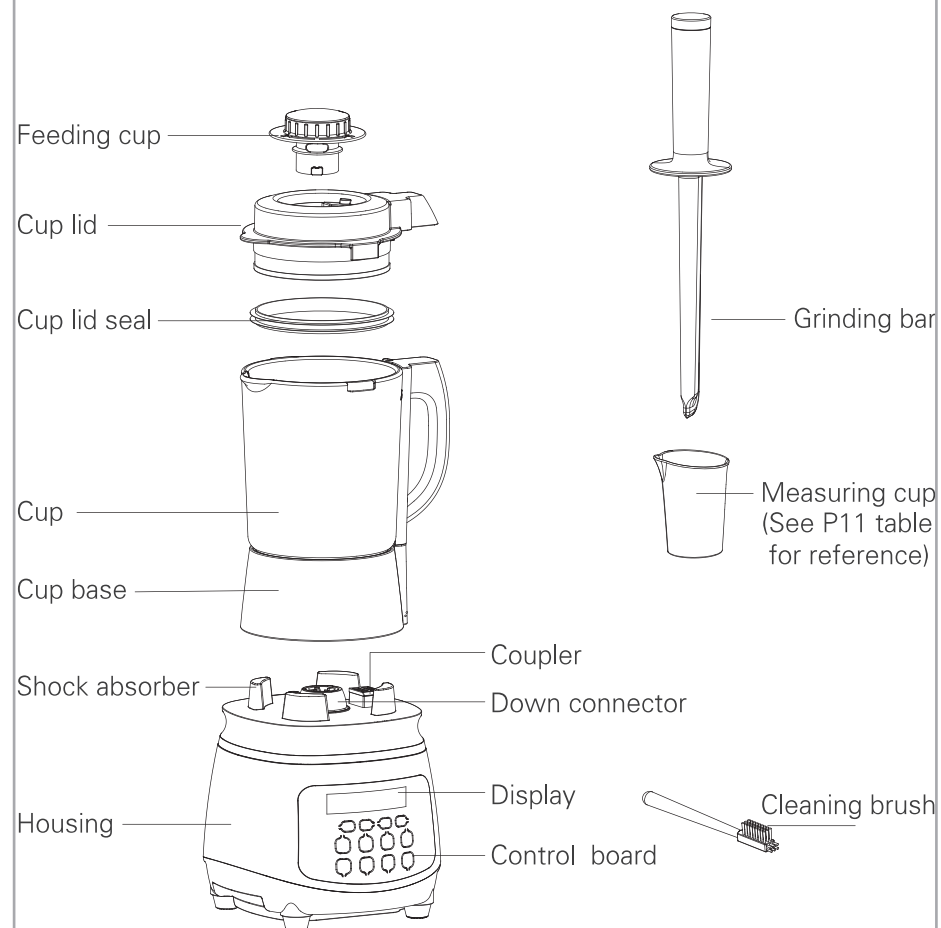
Picture 2

### Daily items worthy of attention

1. This product is for home use only and needs to be used in accordance with the guidelines in this manual.
2. This product is only used in areas below 2000 meters.
3. Before turning on the power, make sure that the mixing cup and other components are in place to avoid danger.
4. This product uses a voltage/frequency of 120V~60Hz, please confirm it before use.
5. Do not plug/unplug the power plug with wet hands to avoid electric shock.
6. Do not use other equipment to directly heat the parts of this product.
7. Do not place this product near high temperature, strong magnetic environment, flammable or explosive gases (such as natural gas, biogas, etc.) to prevent damage, malfunction or fire.
8. Operate the product on a level surface. Do not operate the product on a sloping, unstable surface or on fabrics such as carpets, tissues, etc., and away from the edge of the table to prevent injury or damage to the product.
9. If the blade is caught, to prevent scratching or damage to the product, first unplug the power cord and remove the ingredients that block the blade.
10. This product has the ability to adjust the working speed and time. These functions are only suitable for special recipe making.
11. Working Stirring time: Please operate strictly according to the rated working time. The continuous stirring working time should not exceed 6 minutes, after the longest working 6 minutes, stop the machine for 1 minute. For 3 consecutive cycles, it must be stopped for 15 minutes, use the machine after the motor is cooled. Refer to the recipe description and display instructions for specific time of each program.
12. Heating working time: Please operate strictly according to the rated working time, continuous working time should not exceed 40 minutes.

13. Do not move the product during work to avoid spillage of food, resulting in burns and electric shock.
14. If the product stops working during operation, it may be caused by motor temperature control protection. Please disconnect the power supply and cool it for 20–30 minutes before using.
15. If the product is interrupted during the work of making hot drinks, please replace the ingredients before re-energizing. Do not press the button to continue working, otherwise it will cause sticky problem.
16. This product is controlled by smart chips. It is normal if intermittent sounds occur when smashing.
17. Always disconnect the power before removing, installing, adjusting, or cleaning any part of the product.
18. If the power cord is damaged, it must be replaced by a professional from the manufacturer, its service department or similar to avoid hazards.
19. Please check the power cord, plug and other parts for damage before using the product. If the damage is found, please stop using the product. Please contact our customer service department in time. Do not disassemble and repair it yourself to avoid danger.
20. It is strictly forbidden to directly rinse the handle of the mixing cup and the base of the cup to prevent the handle and the heating plate of the cup base from water entering, causing a short circuit or danger.
21. Do not allow water to enter the stirrer handle and the coupler on the housing. If water is in, it must be wiped dry before use.
22. When no one is using this product, please pull out the power plug in time to prevent damage caused by short circuit.
23. Do not dispose of any parts of this product in a dishwasher, microwave or disinfection cabinet to avoid damage.
24. The parts and materials in contact with the foodstuffs are in compliance with food grade certification to ensure clean, hygienic and reliable of the product.
25. This product is not intended to be used by persons (including children) who have physical, sensory or mental impairments or lack of experience and knowledge, unless there are people responsible for their safety to provide supervision or guidance.
26. When discarding this product and product packaging, please return it to the relevant qualification department, and cut off the power cord when discarding the product.

## Chapter 2 Components



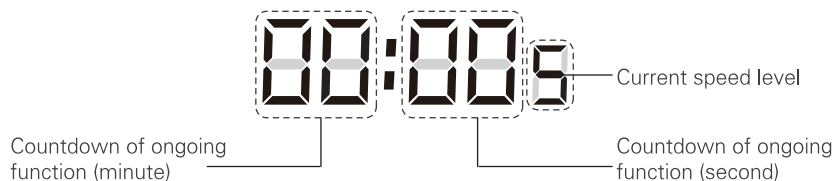
Note: Please refer to the inside product for real product image.

# Chapter 3

## Operating Instruction

### Introduction of all display areas

#### ● Working state display area



#### ● One press control:

Soymilk: making five grains soymilk, such as oatmeal walnut and original flavor soymilk

Soup/Rice paste: making various soup and rice paste, such as sesame paste

Coarser Grains Porridge: making coarser grains porridge, such as buckwheat corn porridge

Juice: making all kinds of vegetable and fruit juice, milkshake, such as orange juice

Sauce: making kinds of fruit sauce, such as sesame and apple sauce

Warm: for warming the food

#### Note:

- The speed and time defined by the functional program has been set to an ideal state and need not be adjusted.
- Do not exceed the maximum scale of the mixing cup.
- When using this product to make fish soup, there may be a small amount of fish bone remains due to the difference in species and size of fish. Please use a filter net before drinking.

#### ● Control buttons:

start/cancel: for entering into or cancel selected function

start/cancel: for entering into or cancel selected function

#### ● Manual control button (for special recipe)

Press time ‘+’ or ‘-’ to adjust operating time from 5 sec to 6 mins, long press to fast adjust

Press speed ‘+’ or ‘-’ to adjust from level 1~9, H indicate highest speed



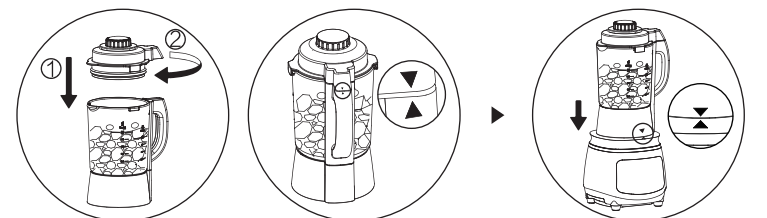
#### ● One press button operating instruction:

1. Put material into blender cup and cover and lid

#### Remark:

- Don't forget to install cover seal;
- Pls make sure material quantity shouldn't exceed requirement of manual and recipe;
- Total volume should be lower than 1400ml if making hot drink; total volume should be lower than 1750ml if making cold drink;

2. Pls install blending cup back to housing properly as instruction picture.



3. Connect power

4. Selected corresponding function as instructed in recipe

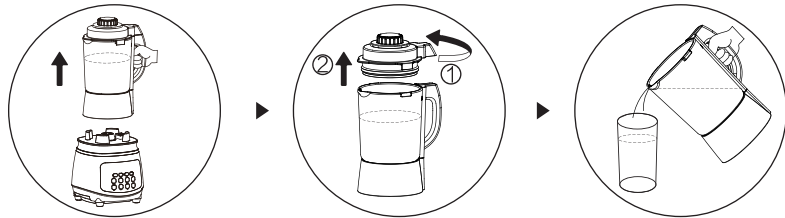
5. Press “start/cancel” button



6. After the processing of the ingredients is completed, the product will automatically stop running, after 5-voice “beep” sound the food is ready. After the blade has completely stopped rotating, remove the mixing cup and pour out the food.

**Note:**

- During the working process of the product, except for the “Start/Cancel” button, it is normal for other buttons to be unresponsive.
- The heating function (grain soy milk, soup/paste, miscellaneous porridge, warm) is processed, and the product shows “b”, indicating that the product has entered the heat preservation state. Maximum keep-warming time 4 hours.



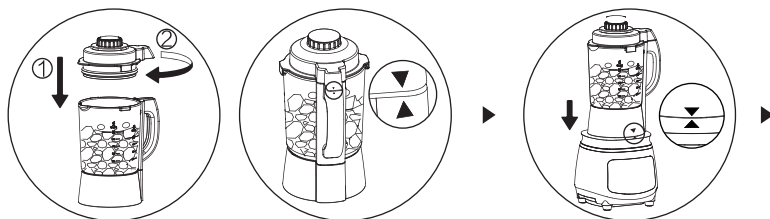
● **Detailed Instructions For Special Recipe Function:**

1. Place the ingredients to be processed into the mixing cup, cover the lid and the feeding cap, and ensure the cup is in place.

**Note:**

- Do not forget the lid seal;
- Special recipe programs do not have heating process;
- When adding warm water, the total amount of ingredients and liquids should not exceed 1400mL; As for cold drinks, the total amount of ingredients and liquids should not exceed 1750mL.

2. Attach the mixing cup filled in foodstuff with lid closed to the main body according to the place mark.



3. Turn on the power.

4. Set the working time and speed according to the instructions on the special recipe.

Note: When the working time is set to 00:00, the machine cannot be started.

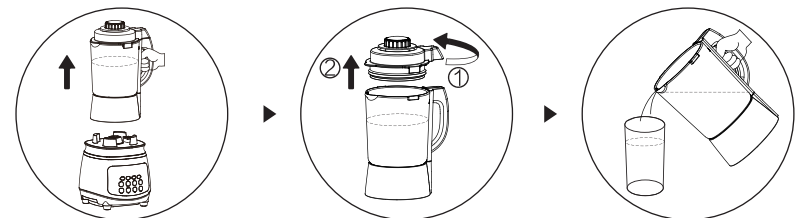
5. Select the "Start / Cancel" button and the product will start running.

Note: If the blade jams when the product starts running, please adjust the “speed gear position” to increase the running speed or cut the food into small pieces.



6. After the processing of the ingredients is completed, the product will automatically stop running, after 5-voice “beep” sound the food is ready. After the blade has completely stopped rotating, remove the mixing cup and pour out the food.

Note: In the working process of the product, except for the “Speed+,-” and “Start/Cancel” keys, it is normal for other buttons to not respond.



## Chapter 4 Maintenance and maintenance

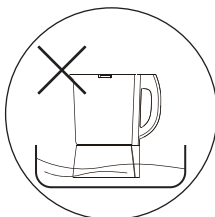
1. Unplug the power plug before cleaning the product.
  2. Please clean the product in time after use.
  3. Wipe the body and the outside of the mixing cup with a damp cloth. Do not put the main body in water or other liquids. Or be rinsed under water or other liquids to prevent leakage or damage to the device. (Figure 3, Figure 4, Figure 5)
  4. When cleaning, rinse the inside of the mixing cup and accessories with water, and wipe it dry (Figure 6); When washing the inside of the mixing cup, be careful that the blade is sharp to avoid cuts and wear protective gloves.
- Note: The paste can be cleaned it won't affect normal use.
5. Do not use steel balls, abrasive cleaners or corrosive liquids such as benzene or acetone to clean the product
  6. Make sure the product is clean and dry before storing the product
  7. This product should be stored in a dry place and protected from direct sunlight.
  8. Quick cleaning: add right amount of water to the mixing cup, install the lid and feeding cover, and install the mixing cup on the main body, turn on the power and press the “Jog/Cleaning” button to run for 5 to 10 seconds. Disconnect the power, remove the mixing cup, open the lid and pour out the water and wipe it dry.

Note:

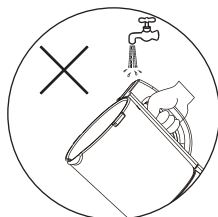
If you are exposed to greasy ingredients such as meat, it is recommended to wash them manually with dishwashing detergent.



Picture 3



No immersing  
Picture 4



No washing  
Picture 5



Picture 6

## Chapter 5 Safety indexes

Rated Voltage: 120V~

Rated Frequency: 60HZ

Heating Power: 900W

Motor Power: 1000W

Rated Capacity: Hot drink 1400ML

Cool drink 1750ML

## Chapter 6 Judgment of abnormal phenomena

Phenomenon	Reasons	Solution
Solution	<ol style="list-style-type: none"> <li>1. The power cord is not plugged in properly</li> <li>2. Blender cup and body are not well assembled</li> </ol>	<ol style="list-style-type: none"> <li>1. Check the power cord and make sure to plug in the socket.</li> <li>2. Make sure the stirring cup is properly installed with the body.</li> </ol>
Indicator light is on but machine does not work	Product failure	Send to Joyoung service center to repair
Heating does not stop	Product failure	Send to Joyoung service center to repair
Overflowing pot	<ol style="list-style-type: none"> <li>1. Select not appropriate function keys</li> <li>2. The surface of the anti-overflow electrode has residue</li> <li>3. Add too much or too little material and water</li> <li>4. Product failure</li> </ol>	<ol style="list-style-type: none"> <li>1. Press the recipe or instructions to select the corresponding function keys</li> <li>2. Wash the cup lid</li> <li>3. Add material as the recipe or the instruction</li> <li>4. Send to Joyoung service center to repair</li> </ol>
Creamy	<ol style="list-style-type: none"> <li>1. The blending cup is not cleaned</li> <li>2. Add too much material</li> <li>3. Choose the wrong function</li> </ol>	<ol style="list-style-type: none"> <li>1. Wash the blending cup</li> <li>2. Add material as the recipe.</li> <li>3. Choose the right function as recipe or instruction book.</li> </ol>
Processing time is too long	The voltage is too low	Use the voltage stabilizer
"E00" alarm	The lid has debris on the anti-overflow electrode	Wash the cup lid
"E02" alarm	The lid was not properly installed	Rescrew the lid
"E03" "E04" alarm	Abnormal voltage	Use the voltage stabilizer
"E10" alarm	<ol style="list-style-type: none"> <li>1. Add too much material</li> <li>2. No water in blending cup</li> <li>3. Choose the wrong function keys</li> <li>4. Product failure</li> </ol>	<ol style="list-style-type: none"> <li>1. Add material as recipe or the instruction book.</li> <li>2. Add water then start to work</li> <li>3. Choose the right function as recipe or the instruction book.</li> <li>4. Send to Joyoung service center to repair</li> </ol>

Phenomenon	Reasons	Solution
“E01” “E05” “E06” “E07” “E08” “E09” “E11” “E12” “E13” alarm	Product failure	Unplug the plug and wait for 1 minute, switch on the power and start again. If the fault is still unsolved, please send it to the after-sales service center of Joyoung for maintenance

- If there is any hard problem, please do not disassemble the machine by yourself, Please contact the Joyoung service center for help.
- If there any change of model or accessory, please forgive us that we will not notify specially.

### Packing detail

Name	Super blender	Instruction book	Mesuring cup	Recipe	Blending bar	Cleaning brush
Amount	1set	1pcs	1pcs	1pcs	1pcs	1pcs

### Measuring cup- Reference table

Ingredients	One cup	Weight/g
Soy beans	One cup	90
Rice	One cup	110
Millet	One cup	120
Red beans	One cup	100
Green beans	One cup	100
Black sesame	One cup	80
White sesame	One cup	80
Oats	One cup	100
Peanut	One cup	80
Cashew nuts	One cup	70

All the information are provided by Joyoung Reseaching department, If there any change of model or accessory, please forgive us that we will not notify specially.

Product Name: High Speed Blender		Model : JYL-Y15U				
Unit	Restricted substances and chemical symbols					
	(Pb)	(Hg)	(Cd)	(Cr <sup>+6</sup> )	(PBB)	(PBDE)
Material contacted with food (cup body,cup lid,etc)	○	○	○	○	○	○
Rubber parts	○	○	○	○	○	○
Non-flame retardant plastic structural parts (stirrer, key, etc.)	○	○	○	○	○	○
Stainless steel structural parts (mixing knife, gasket, etc.)	○	○	○	○	○	○
Other metal structural parts (shaft sleeve, decorative parts, etc.)	○	○	○	○	○	○
Standard parts (screw, washer, etc.)	○	○	○	○	○	○
Glass cup*	○	○	○	○	○	○
Flame retardant plastic structural parts (base, motor support, etc.)	○	○	○	○	○	超出 0.1 wt %
Electrical components, printed circuit board components (PCB boards, capacitors, transformers, etc.), electrical heaters, motors, power cords, wiring harness,	超出 0.1 wt %	○	超出 0.01 wt %	○	○	超出 0.1 wt %

备考1. “超出0.1 wt %” 及 “超出0.01 wt %” 系指限用物质之百分比含量超出百分比含量基准值。  
Note 1: “Exceeding 0.1 wt %” and “exceeding 0.01 wt %” indicate that the percentage content of the restricted substance exceeds the reference percentage value of presence condition.  
备考2. “○” 系指该项限用物质之百分比含量未超出百分比含量基准值。  
Note 2: “○” indicates that the percentage content of the restricted substance does not exceed the percentage of reference value of presence.  
备考3. “—” 系指该项限用物质为排除项目。  
Note 3: The “—” indicates that the restricted substance corresponds to the exemption.